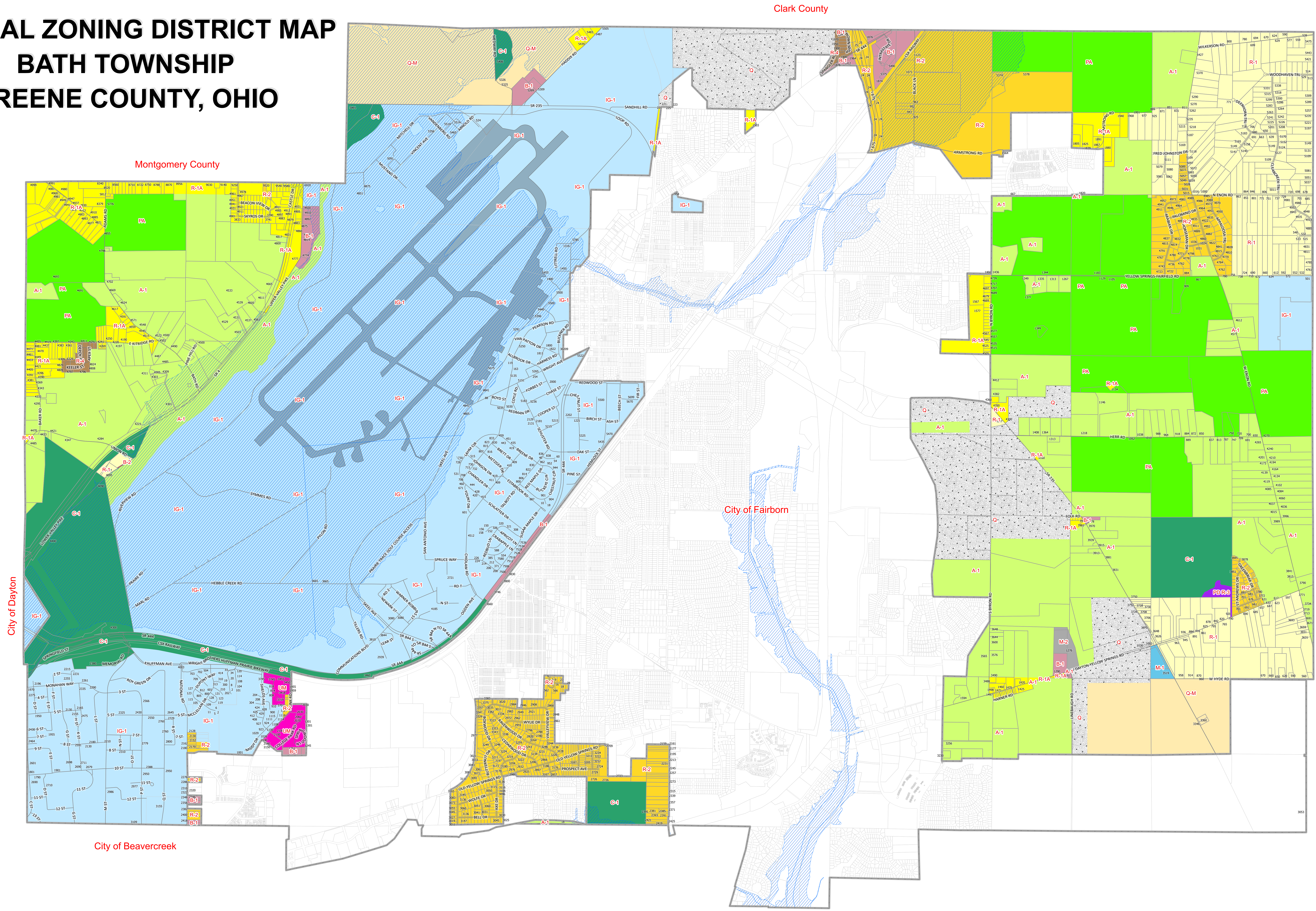


OFFICIAL ZONING DISTRICT MAP

BATH TOWNSHIP

GREENE COUNTY, OHIO

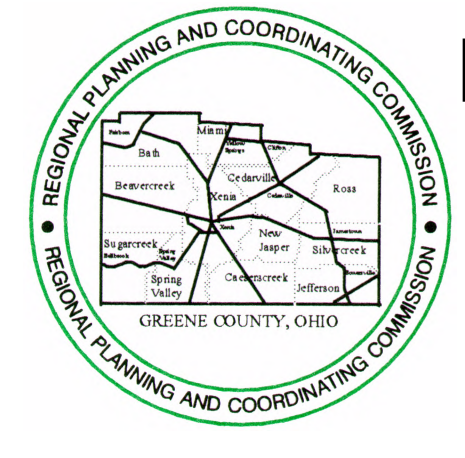
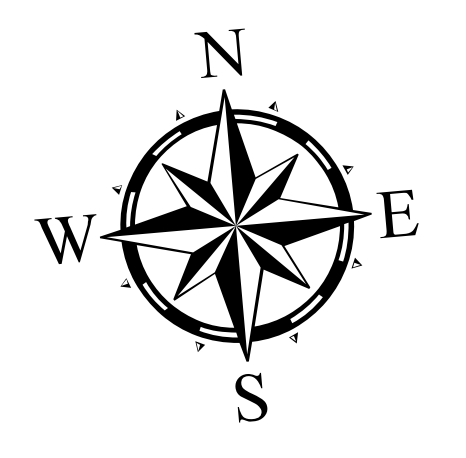


ADOPTED IN 1954 BY:
THE BATH TOWNSHIP BOARD OF TRUSTEES

GLENN W. CECIL, SR TRUSTEE HOWARD W. YOUNG TRUSTEE PAUL E. CASTLE TRUSTEE

THIS IS TO CERTIFY THAT THIS IS THE OFFICIAL ZONING DISTRICT MAP REFERRED TO IN SECTION 302 OF THE ZONING RESOLUTION OF BATH TOWNSHIP, GREENE COUNTY OHIO. SAID MAP WAS LAST AMENDED BY THE TOWNSHIP BOARD OF TRUSTEES AND MADE EFFECTIVE ON AUGUST 21, 2024.

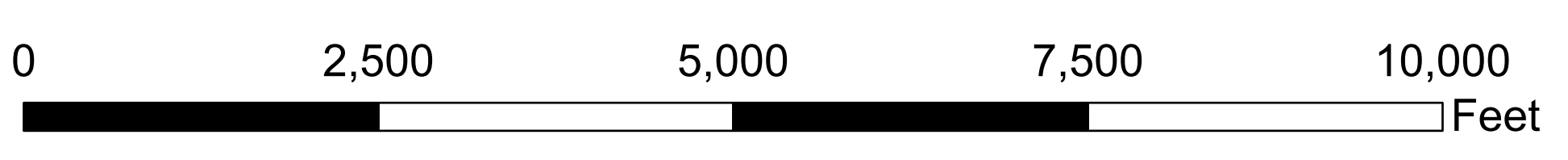
ROB HOFFMAN TRUSTEE LINDA KELLER FISCAL OFFICER
MICHELLE CLEMENTS TRUSTEE KASSIE LESTER TRUSTEE



REGIONAL PLANNING AND COORDINATING COMMISSION

PREPARED AS A COOPERATIVE EFFORT BETWEEN
REGIONAL PLANNING AND COORDINATING COMMISSION
OF GREENE COUNTY OHIO AND GREENE COUNTY GIS
AUGUST 2024

1 inch equals 1,091



- A-1 AGRICULTURAL DISTRICT
- B-1 BUSINESS
- B-2 BUSINESS
- C-1 CONSERVATION AND RECREATION
- IG-1 INSTITUTIONAL AND GOVERNMENTAL
- M-1 GENERAL INDUSTRIAL
- PA - PRIME AGRICULTURAL
- PD R-3 PLANNED RESIDENTIAL DISTRICT
- Q MINERAL EXTRACTION AND STORAGE
- Q-M MINERAL EXTRACTION, STORAGE, PROCESSING & MANUFACTURING
- R-1 - RURAL RESIDENTIAL
- R-1A - SUBURBAN RESIDENTIAL
- R-2 LOW DENSITY RESIDENTIAL
- R-4 - MODERATE RESIDENTIAL
- UM - UNIVERSITY MIXED
- FPO - FLOOD PLAIN OVERLAY